



Annual Report 2011-2012



Truman State University's Sustainability Principles:

- *Acknowledging the interdependence of humanity and nature*
- *Embracing inter-generational stewardship*
- *Accounting for triple bottom line practices*
- *Conserving natural resources*
- *Striving to eliminate waste*
- *Investing in collaborative community-based projects*
- *Developing a closed-loop local food system*
- *Promoting multi-modal transportation*
- *Innovating - Evolving - Educating*

Truman Awarded STARS BRONZE Rating March, 2012

The Sustainability Tracking, Assessment & Rating System™ (STARS) is a transparent, self-reporting tool for colleges and universities to measure their sustainability progress.

STARS:

- Provides a framework for understanding sustainability in all sectors of higher education.
- Enables meaningful comparisons over time and across institutions using a common set of measurements developed with broad participation from the campus sustainability community.
- Creates incentives for continual improvement toward sustainability.
- Facilitates information sharing about higher education sustainability practices and performance.
- Builds a stronger, more diverse campus sustainability community.



Summary of Sustainability Efforts

Truman's efforts during most of the 2011/2012 academic year were focused on benchmarking our sustainability profile for the STARS ranking, and a high-level summary of this information follows.

Education and Research

Co-Curricular Education - Engaging students in sustainability issues through co-curricular activities allows students to deepen and apply their understanding of sustainability principles. Activities Truman has undertaken include:

- Developed a sustainability educators program in Residential Life
- Sustainability Outreach Campaign - Implemented a sustainability pledge, a guide for green living in the Residence Halls, and a sustainability website: <http://sustainability.truman.edu> website
- Several student groups were formed and are focused on sustainability issues
- Commiversity Garden - Student support and management of a community organic garden
- Students in the Bike Co-op provide a workshop and training for others in Kirksville to maintain their own bicycles.
- Sustainability Events -
 - Established a Sustainability Series (plan to hold 2 events each year) and supported several other on-campus events as well (the Beehive Design Collective and the Renewable Energy Conference)
 - Student-sponsored Earth Week activities
 - Organized Campus Sustainability Day activities

Curriculum - By training and educating future leaders, scholars, workers, and professionals, higher education institutions are uniquely positioned to prepare students to understand and address sustainability challenges.

Truman participates in this educational mission through:

- Offering 9 Sustainability-Focused & 45 Sustainability-Related Courses, representing a **TOTAL of 54 courses across 14 DEPARTMENTS**
- Participation in an immersive experience in sustainability through the Belize Study Abroad program.
- A minor in Environmental Studies
- An online sustainability certificate

Sustainability-Focused Courses

- concentrate on the concept of sustainability including its social, economic, and environmental dimensions; or
- those that examine an issue or topic using sustainability as a lens

Sustainability-Related Courses

- incorporate sustainability as a distinct course component or module;
- concentrate on a single aspect of sustainability; or
- address a sustainability principle or issue

Innovation

1st Carbon Neutral Presidential Installation

... with a Presidential Pear Tree planted to commemorate the event.

- The first project of the President's Sustainable Action Committee was the Presidential Installation of Troy Paino, October 10th, 2010. In order to make the event carbon neutral the committee asked guests to fill out their personal travel information. The amount of electricity used for the actual event was recorded as well. These data were then calculated into a total amount of carbon emissions and a donor purchased an equivalent amount of carbon credits. Fifteen Megawatts of Renewable Energy Credits were purchased in total.

• ***This event was thought to be the first of its kind in the country.***

Bulldog Biodiesel

- Bulldog Biodiesel began in the fall semester of 2007 as a collaborative effort between the agriculture science senior practicum and the American Chemical Society. The group quickly garnered the interest and support of many students and faculty within the University. Thanks to the assistance of the Agriculture Science development fund, they were able to purchase a BioPro190 automated processor in January 2008, and have since been producing biodiesel with waste vegetable oil donated by several cafeterias and community restaurants.

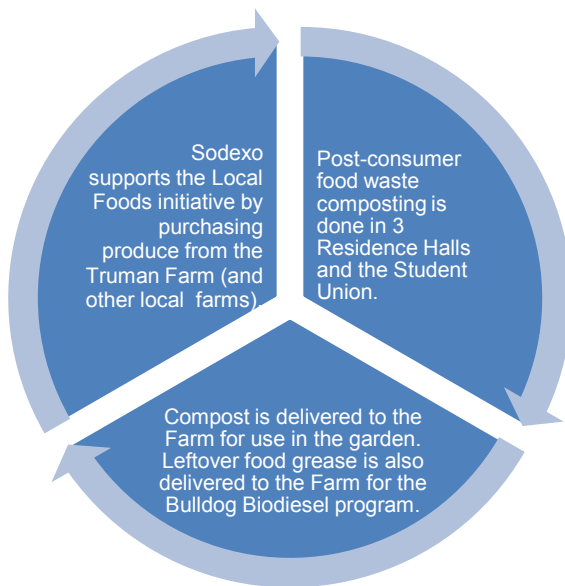
• ***Bulldog Biodiesel fuels all equipment at the Truman Farm.***

Summary of Sustainability Efforts (continued)

Operations

Dining Services - Truman is working in partnership with Sodexo to help build a sustainable food system. Efforts to date include:

- Trayless dining in all Residence Halls
- Daily vegan dining options in all Residence Halls
- Establishment of Meatless Mondays and No-Fry Fridays
- Sodexo uses all trans-fat free items
- All salad production uses pre-consumer food waste composting
- Perishable foods are donated to nursing homes and food depots during class breaks
- Sodexo uses all recycled content napkins
- Reusable mug refill discounts of approximately 10%
- Reusable to-go containers available for student purchase
- **Farm-to-School Program**



Purchasing - Truman uses its purchasing power to help build a sustainable economy through the following practices:

- All computers purchased are EPEAT Gold or EPEAT Silver compliant
- Historically Underutilized Businesses are used whenever possible, and included as part of the purchasing process
- Preference is given to Missouri vendors, supporting local businesses

Grounds - Campus grounds can be planned, planted, and maintained while minimizing the use of toxic chemicals, protecting wildlife habitat, and conserving water and resources. Truman's ground management efforts include:

- An integrated pest management plan (pesticides avoided)
- Preference is placed on using native plantings
- Mulching all grass and leaves
- Installation of a turf football field

Transportation - Moving toward sustainable transportation systems can reduce greenhouse emissions and other pollutants. Truman is adopting some sustainable transportation options:

- Ride Share Programs for students and staff

Waste - Truman is moving toward zero waste by reducing, reusing, recycling, and composting. Efforts include:

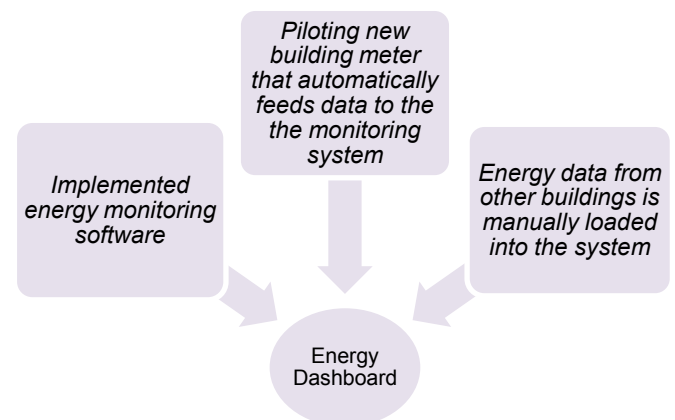
- All electronic waste is sold at surplus or for scrap metal
- Truman utilizes the state contract with certified contractors to pick up and dispose of hazardous waste
- Extra materials are sold at surplus or traded through the Departmental Exchange Program website
- Duplex printing has been set as the default for student printing, with pricing incentives to print in duplex
- Course catalogs, schedules, and other directories are available online and not printed
- Recycling (and free-cycling) is encouraged during the move-out process

Water - Truman seeks to conserve water and is making efforts to protect water quality through:

- Establishment of a policy and plan to reduce storm-water runoff during new construction
- Tracking water usage for all buildings (each building has its own water meter)
- Low flow faucet installations in select buildings
- Water sensor monitors on faucets in Missouri, Dobson, and Ryle
- Use of energy efficient shower heads
- Limited use of sprinklers by following weather-informed irrigation practices (one building uses a moisture sensor)

Energy - Implementing conservation measures and switching to renewable sources of energy can help save money and provide some protection from utility rate volatility. Recent Truman conservation measures include:

- A new Physical Plant boiler
- New efficient lights in Pickler Memorial Library
- LED lights installed on Pershing walkway
- Timers for temperature control in 4 campus buildings
- Lighting sensors used in kitchens, laundries, trash rooms and most restrooms
- Motion sensors technology used for faucets in Missouri, Dobson, Ryle, and 1 vending area
- Completed a Master Utilities Plan for electrical and HVAC systems on campus; Gas, water and wiring will be added next
- **Energy Metering and Monitoring System**



Summary of Sustainability Efforts (continued)

Planning, Administration and Engagement

Diversity and Affordability - To achieve environmental and social justice, society must work to address discrimination and promote equality. Higher education opens doors to opportunities that can help create a more equitable world, and those doors must be open through affordable programs accessible to all regardless of race, gender, religion, socio-economic status and other differences. Truman is striving to address diversity and affordability issues through the following programs:

- The Office of Human Resources manages diversity and equity issues on campus
- Students participate in the EBI campus-wide student climate/diversity assessment
- The Multicultural Affairs Center provides support for underrepresented groups
- The McNair Program supports programs for future faculty
- The Trio, Upward Bound and Upward Bound Bridge programs all strive to make Truman accessible and affordable to low-income students
- Gender neutral housing is accommodated for those students requesting this service
- Cultural competence training is provided to students

Human Resources - Investment in human resources is integral to the achievement of a healthy and sustainable balance between human capital, natural capital, and financial capital (the triple bottom line). Truman tries to address this balance by:

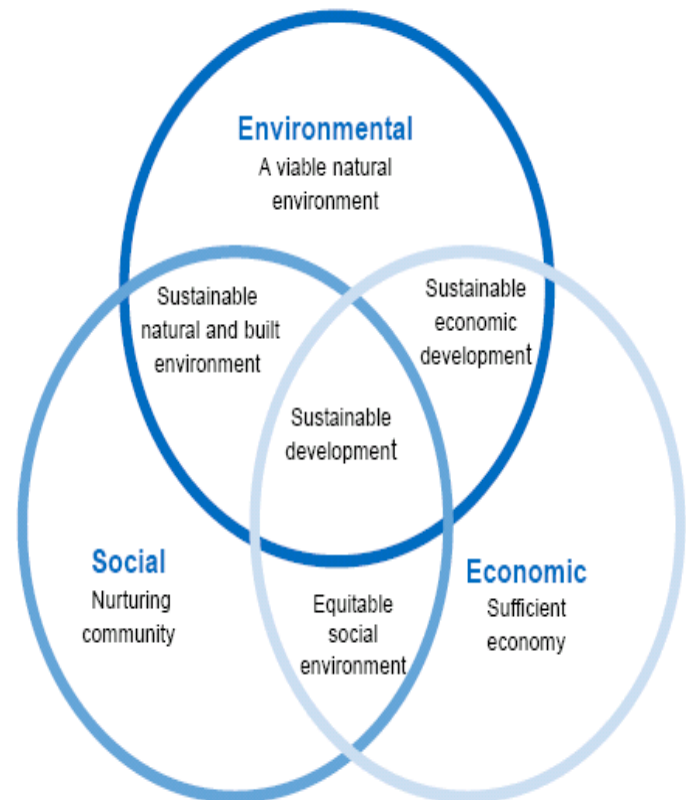
- Asking employees to complete an Employee Satisfaction Evaluation at least every 3 years
- Promoting employee and student wellness through the President's Committee for Campus Well-Being
- Providing counseling and referral services through the Employee Assistance Program

Coordination and Planning - Truman is dedicating resources to sustainability coordination, incorporating sustainability into primary campus plans, and developing plans to move forward on sustainability. This is demonstrated through the following:

- The President's Sustainability Action Committee is responsible for sustainability efforts on campus
- Truman's Strategic Plan includes a specific strategy on sustainability
- The President's Sustainability Action Committee has developed a tactical plan, with a goal to achieve the STARS Silver ranking by 2015

Public Engagement - Volunteerism and the sense of compassion that community service helps develop are fundamental to achieving sustainability. Community engagement can help students develop leadership skills while deepening their understanding of practical, real-world problems. Truman addresses its public engagement responsibilities in several ways:

- Through community partnerships with the Ray Miller Garden (coordinated by the Truman Green Thumb student group), and through a recycling partnership with the Sheltered Workshop
- Through inter-campus collaboration with the Missouri Student Environmental Coalition (MSEC), and the Association for the Advancement of Sustainability in Higher Education (AASHE)
- 5626 students were engaged in community service
- 57,200 student community service hours were contributed last year
- Students are asked to take the sustainability pledge before they graduate
- Community service is included on the student's co-curricular record



Strategic Plan for Sustainability, 2013-2015

The University's Strategic Plan for 2011-2015 identified sustainability as a strategic goal under **Theme 2: Securing Financial Stability and Growth**

GOAL 2.4. Make campus more sustainable by reducing consumption of resources.

The purpose of goal 2.4 is to emphasize to our community the importance of considering the sustainability of our various practices. Whether the resources consumed are financial, environmental, or human capital, we need to ensure that our practices are in balance for the long haul. Strategies and action plans supporting the triple bottom line (finances, planet, and people) should result from this goal.

RESPONSE: The University is striving to achieve the STARS SILVER Rating by the end of the 2015 calendar year. This rating represents a continued focus on triple bottom line activities.

The focus through 2013 will be on:

- Documenting sustainability research activities.
- The establishment of a student sustainability office.
- A focus on diversity and employee satisfaction assessments and follow-up activities.
- Employee and student education programs.
- Benchmarks for energy consumption and energy metering (gas, electric, steam, water).
- Reduce energy consumption and carbon emissions.
- Analysis of transportation patterns and options.
- Waste diversion strategies

President's Sustainability Action Committee

Committee Charge - The President's Sustainability Action Committee will **identify and evaluate** ways to modify university practices to bring them into increasing accord with the principles of the Sustainability Initiative. Furthermore, for identified practices of interest, the committee will **document** the current state of these practices and **develop practical benchmarking** for assessing progress towards desired modifications of such practices. The committee will **provide regular advice** to the University President regarding suggested best practices, and will **present an annual report** of its activities to the University President that records progress on practices of interest and indicates future plans.

2012/2013 Committee Members

Nancy Asher
Associate Budget Officer and Coordinator,
Assessment and Testing

John Gardner
Director, Residence Life

Donna Liss, Chair
CIO, Information Technology Services

Lora Cunningham
Director, Sodexo Food Services

Karl Schneider
Director, Facilities Management

Lori Shook
Design Project Manager, Campus Planning

Garrett Grider
Local Foods Coordinator

Dr. Wolfgang Hoeschele
Faculty Member, Society and Environment

Dr. Michael Kelrick
Faculty Member and Biology Dept Chair

Ryan Kohler
Student, Student Government
Environmental Affairs Committee Chair

Ashley Jost
Student, Public Relations Liaison

Judi Schweitzer
Consultant, Sustainability Expert

TBA
Community Member

2011/2012 Committee Members

Nancy Asher
Associate Budget Officer and Coordinator,
Assessment and Testing

John Gardner
Director, Residence Life

Donna Liss, Chair
CIO, Information Technology Services

Dennis Markeson
Director, Sodexo Food Services

Karl Schneider
Director, Facilities Management

Lori Shook
Design Project Manager, Campus Planning

Will Erker
Local Foods Coordinator

Dr. Wolfgang Hoeschele
Faculty Member, Society and Environment

Dr. Michael Kelrick
Faculty Member and Biology Department Chair

Ashley Jost
Student, Student Government
Environmental Affairs Committee Chair

Lauren Massey
Student, Public Relations Liaison

Judi Schweitzer
Consultant, Sustainability Expert

James Turner
Community Member

2010/2011 Committee Members

Nancy Asher
Associate Budget Officer and Coordinator,
Assessment and Testing

John Gardner
Director, Residence Life

Jon Gering, Chair
Dean, School of Science and Mathematics

Dennis Markeson
Director, Sodexo Food Services

Lori Shook
Design Project Manager, Campus Planning

Dr. Wolfgang Hoeschele
Faculty Member, Society and Environment

Dr. Michael Kelrick
Faculty Member, Interdisciplinary Studies

John Nolan
Student, Student Government
Environmental Affairs Committee Chair

Judi Schweitzer
Consultant, Sustainability Expert

James Turner
Community Member